

# HSG



## C

✦ Economical Single-platform Laser Cutting Machine ✦

## Company Culture

### SLOGAN

Shape Metal, Shape Trust

### MISSION

Empowering customers for rapid business growth

### VISION

Committed to becoming a leading global provider of metal forming equipment and comprehensive solutions

## Company Profile



**19**

Global Branches



**100+**

Countries Covered



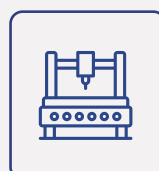
**5**

Manufacturing Bases



**30+**

Global Service Centers



**8,000+**

Annual Capability



**135,000m<sup>2</sup>**

Occupied Area



# C 1500-30000W

## Economical Single-platform Laser Cutting Machine



## Technical Parameters

Technical Parameters	C3015	C4020	C6025	C12025	C14030
Power	1500W-6000W	1500W-6000W	3000W-20000W	12000W-30000W	12000W-30000W
Processing format (L*W)	3048mm*1524mm	4064mm*2032mm	6096mm*2540mm	12500mm*2540mm	14400mm*3100mm
X/Y-axis positioning accuracy	±0.05mm/m	±0.05mm/m	±0.05mm/m	±0.05mm/m	±0.05mm/m
X/Y-axis repositioning accuracy	±0.03mm	±0.03mm	±0.03mm	±0.05mm	±0.05mm
Max. Linkage Speed	120m/min	120m/min	120m/min	120m/min	120m/min
Max. Linkage Acceleration	1.5G	1.5G	1.5G	1.5G	1.5G

\* Machine appearance, technical parameters, function description, data comparison shown in this page are from HSG in-house laboratory. All testing results and experimental data shall be subject to real machine.

## HSG Bus-based Control System

- EtherCAT bus high-speed response with strong anti-interference capability and simple electrical maintenance.
- Automatic management of machine maintenance, core components are monitored in real time for easy and maintenance reminded on a regular basis.



## Follow-up Response Technology

- High sensitivity detection of striker plate.
- High speed follow of vibrating sheet.
- Automatic obstacle avoidance.

## Fully Functional Processing Technology

- High-speed microjoining, nano microjoining, counterbore technology and non-inductive perforation.
- Manual, automatic tracing-edge and anti-collision beam.
- Leftover bits and pieces cutting, coaxial visual sensing and automatic replacing nozzle.
- Common side cutting to reduce leftover bits and pieces and save energy.



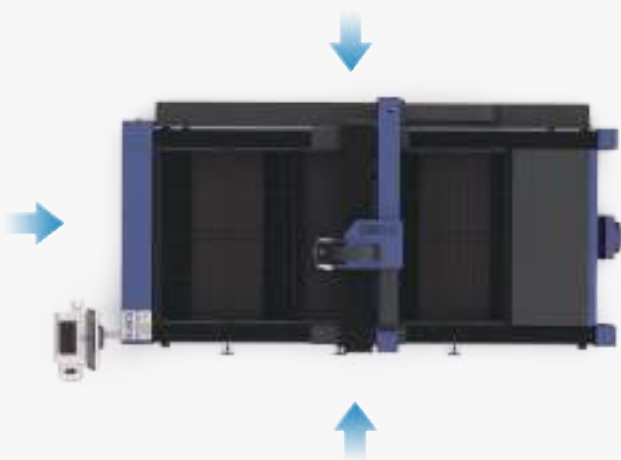


## Professional Nesting Software with Standard Configuration

- High nesting utilization ratio as famous nesting software.
- Simple operation with drawing function and support manual and automatic nesting.
- Support different materials and thicknesses categorized typesetting.
- Excel batch import.

## Support Graphics and G Code Software

- By code conversion software, Alpha T can support other brand equipment for super high compatibility.



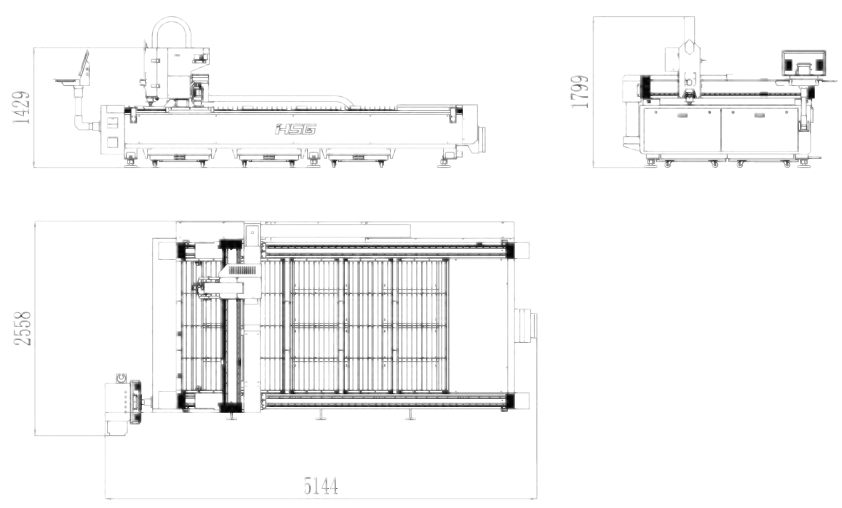
## Tiny But Useful

- Single platform with open structure which can load materials from three directions to achieve tiny machine size.

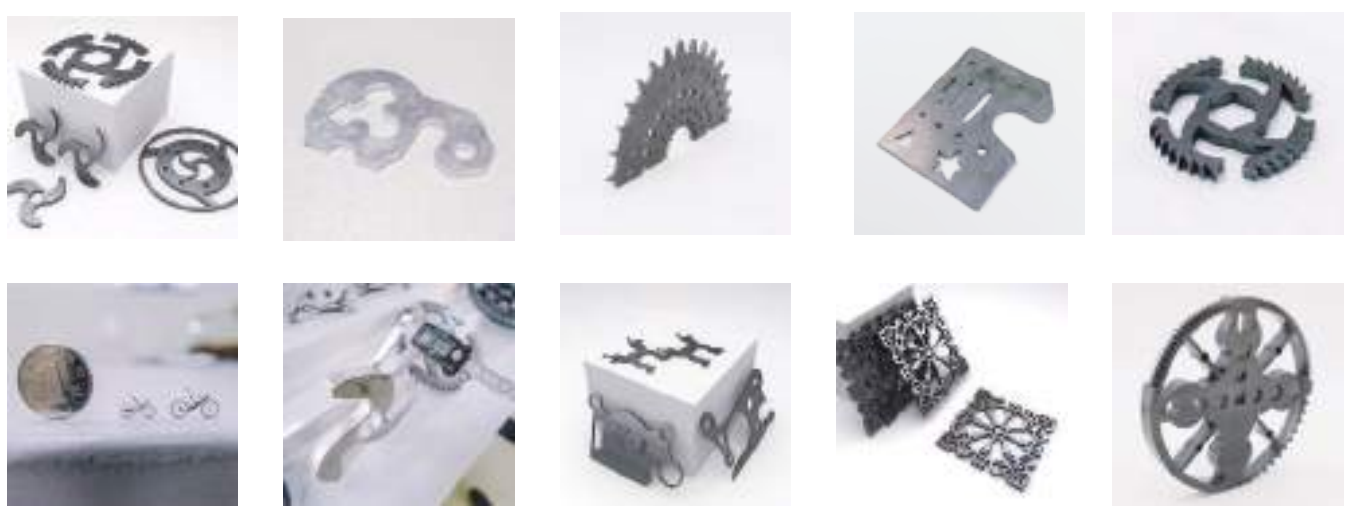


## Machine Foundation

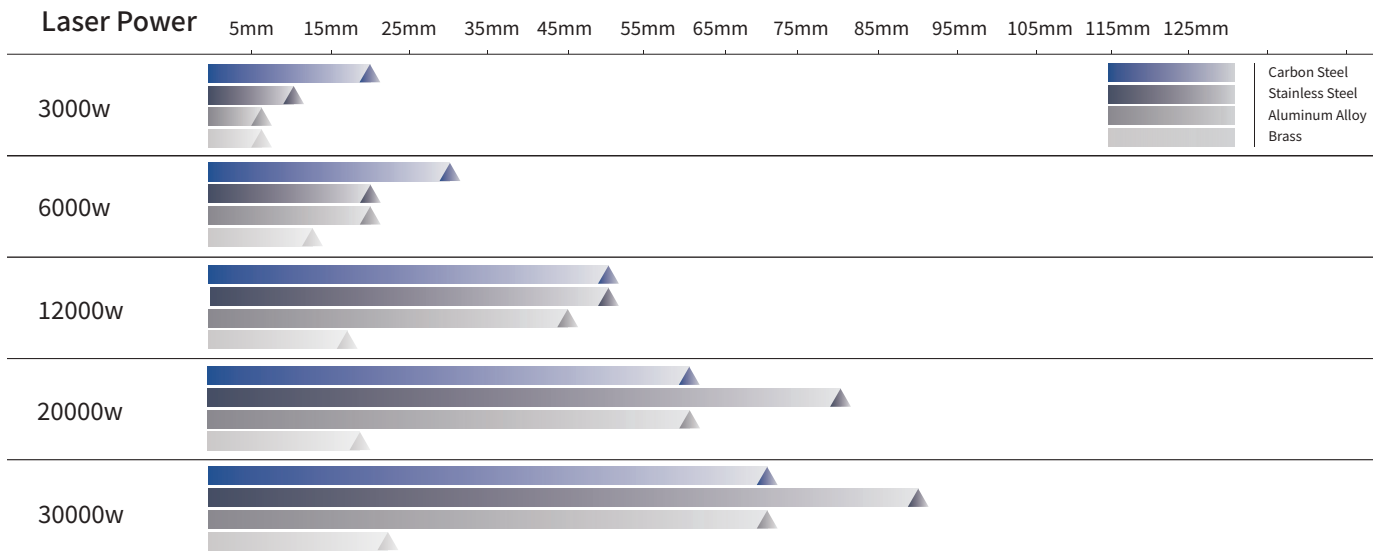
\*The marked size has about 10mm error  
 \*Pictures of C3015 are for reference only and subject to actual dimensions.



## Cutting Samples



## Cutting Capacity



The actual machines shall prevail and above data & pictures are only for reference.



## Shape Metal, Shape Trust



**As a global enterprise, HSG sticks to providing professional and convenient service support to customers at home and board**



### Professional Training

Multiple technical training services and free operation training are provided for customers and dealers in a timely manner.



### Efficient Support

Humanistic service model, online services and 7\*24 hotline to offer solutions and assistance.



### Optimized Transport

Multi-channel transport solutions and a professional transport solution team providing various transport cases to satisfy the demand of customers and save transportation fees.



### Sufficient Accessories

Highly efficient accessory delivery service; multiple network inventories jointly respond to accessory demand, shortening customers' waiting times and accelerating production.



### Careful Services

Domestic door-to-door service and free proofing, with over 100+ dealers providing efficient and convenient services.

# HSG

Shape Metal, Shape Trust



Website



Facebook



Youtube

Headquarters Add.: No. 4, Anye Road, Shunjiang Community Industrial Park,  
Beijiao Town, Shunde District, Foshan, Guangdong, China

Website: [www.hsglaser.com](http://www.hsglaser.com)

Email: [info@hsglaser.com](mailto:info@hsglaser.com)

Tel: +86 757-66833906