

HSG



GX

❑ Double Exchange Platforms Laser Cutting Machine ❑

Company Culture

SLOGAN

Shape Metal, Shape Trust

MISSION

Empowering customers for rapid business growth

VISION

Committed to becoming a leading global provider of metal forming equipment and comprehensive solutions

Company Profile



19

Global Branches



100+

Countries Covered



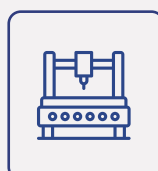
5

Manufacturing Bases



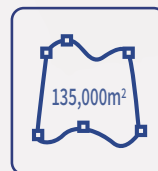
30+

Global Service Centers



8,000+

Annual Capability



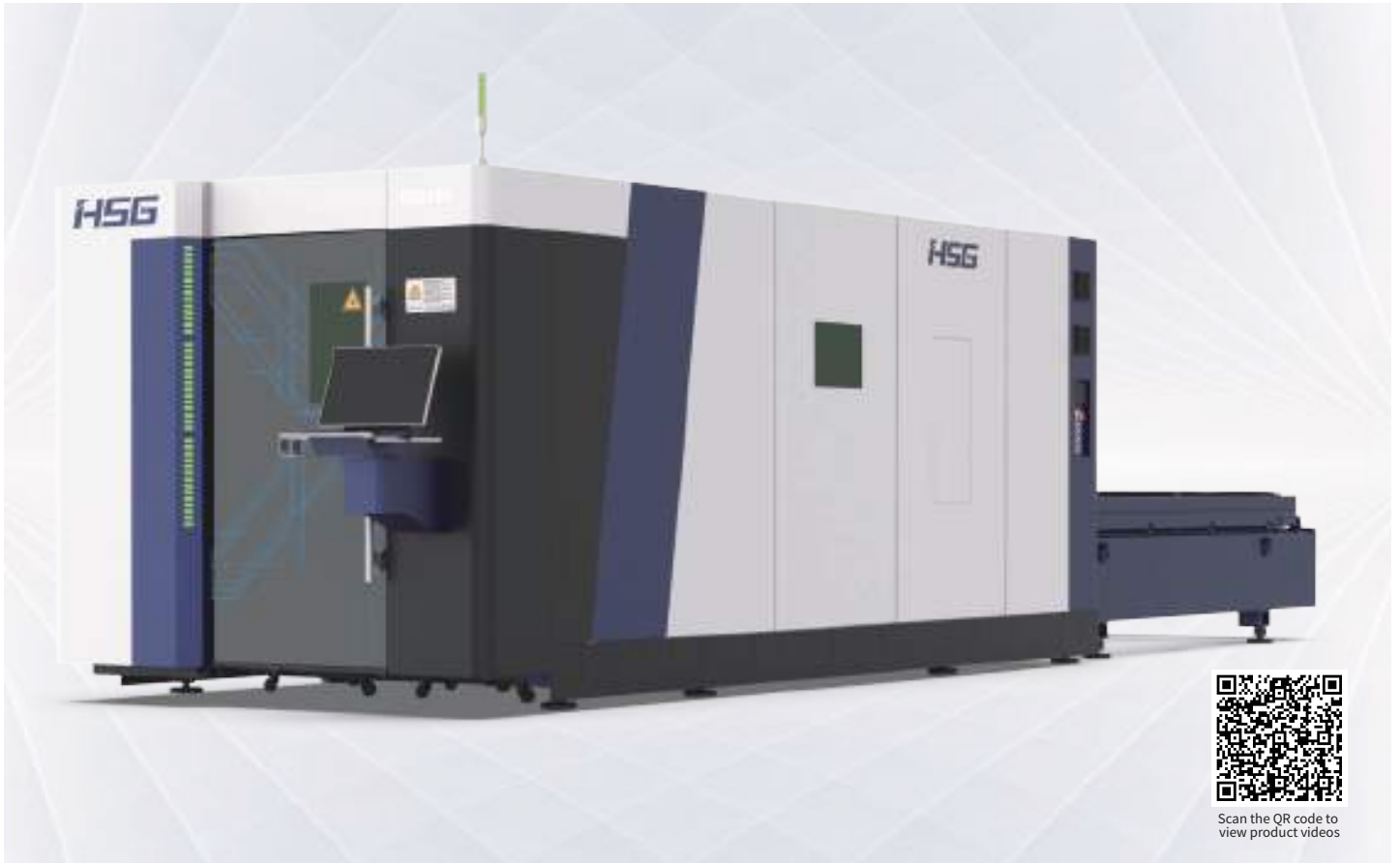
135,000m²

Occupied Area



GX 3000-30000W

Double Exchange Platforms Laser Cutting Machine



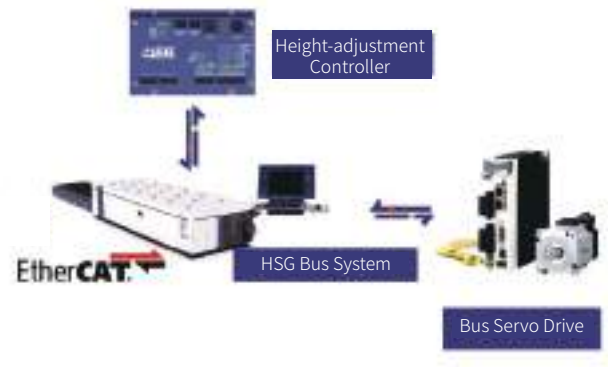
Technical Parameters

Technical Parameters	G3015X	G4020X	G6025X	G12025X
Power	3000W-20000W	3000W-20000W	3000W-20000W	12000W-30000W
Processing format (L*W)	3048mm*1524mm	4064*2040mm	6096*2540mm	12500*2540mm
X/Y-axis positioning accuracy	±0.03mm/m	±0.03mm/m	±0.03mm/m	±0.03mm/m
X/Y-axis repositioning accuracy	±0.03mm	±0.03mm	±0.03mm	±0.03mm
Max. Linkage Speed	140m/min	140m/min	120m/min	120m/min
Max. Linkage Acceleration	1.5G	1.5G	1.5G	1.5G

* Machine appearance, technical parameters, function description, data comparison shown in this page are from HSG in-house laboratory. All testing results and experimental data shall be subject to real machine.

HSG Bus-based Control System

- EtherCAT bus high-speed response with strong anti-interference capability and simple electrical maintenance.
- Support absolute value and continue in outage and at the break-point for convenient remote diagnosis and servo adjustment.
- Automatic management of machine maintenance, core components are monitored in real time for easy and maintenance reminded on a regular basis.



Follow-up Response Technology

- High sensitivity detection of striker plate.
- High speed follow of vibrating sheet.
- Automatic obstacle avoidance.

Fully Functional Processing Technology

- High-speed microjoining, nano microjoining, counterbore technology and non-inductive perforation.
- Manual, automatic tracing-edge and anti-collision beam.
- Leftover bits and pieces cutting, coaxial visual sensing and automatic replacing nozzle.
- Common side cutting to reduce leftover bits and pieces and save energy.





Professional Nesting Software with Standard Configuration

- High nesting utilization ratio as famous nesting software.
- Simple operation with drawing function and support manual and automatic nesting.
- Support different materials and thicknesses categorized typesetting.
- Excel batch import.

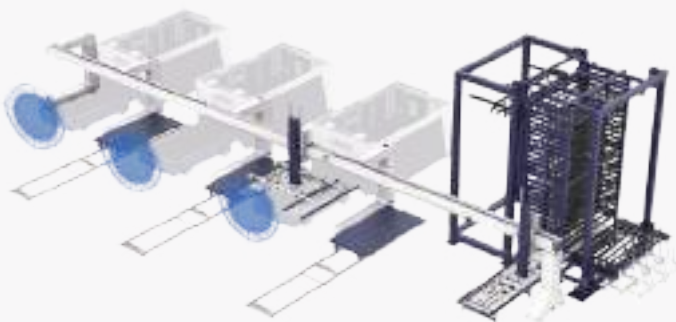
Support Graphics and G Code Software

- By code conversion software, Alpha T can support other brand equipment for super high compatibility.

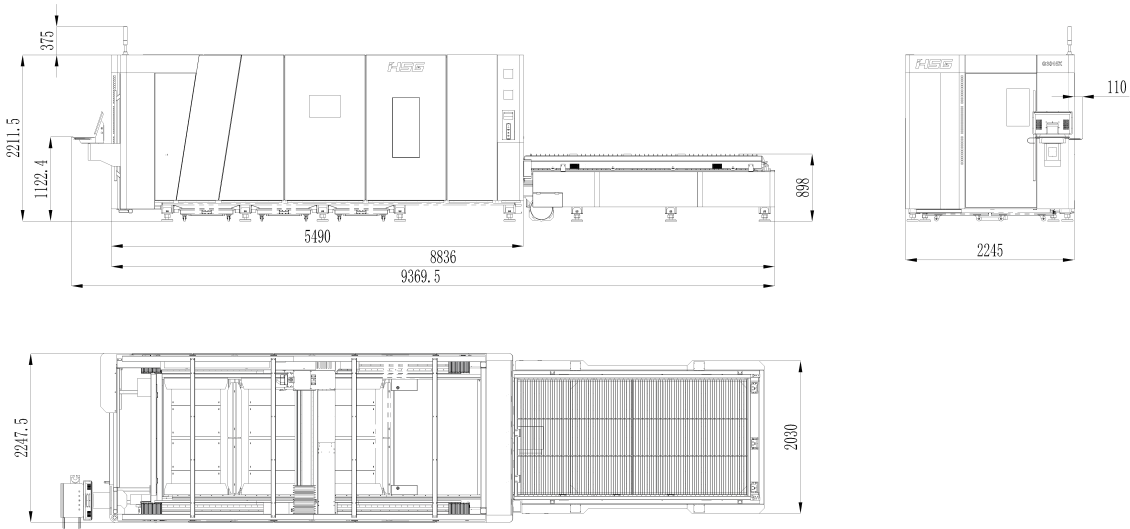


Smart Factory and Standard Central Control System Interface Intelligent management

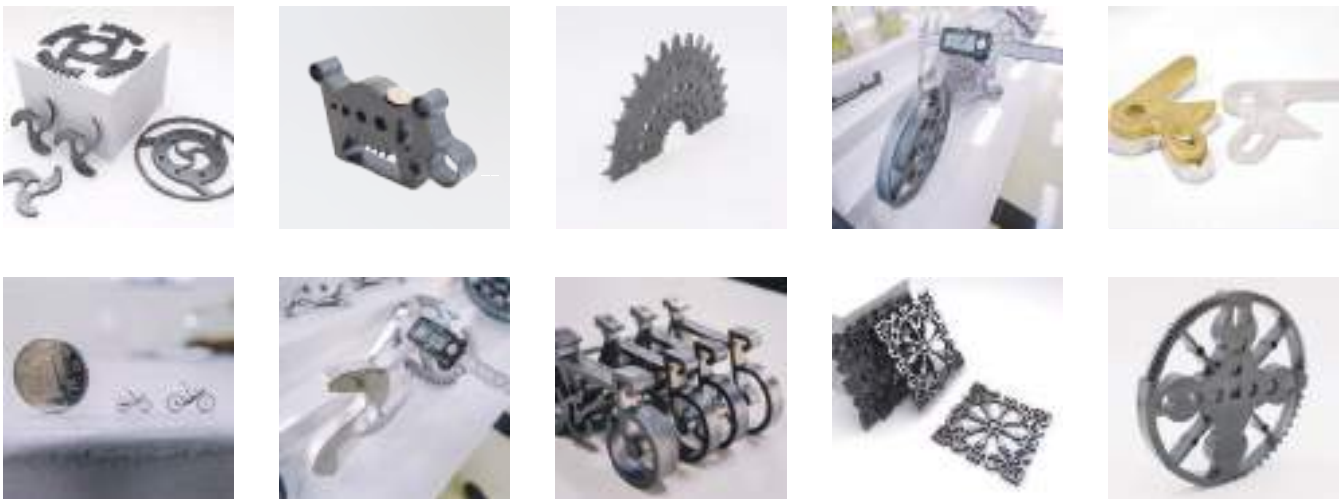
- Integrate with material tower and automatic loading and unloading equipment to create automatic production lines.
- Intelligent system to form production report by one click.



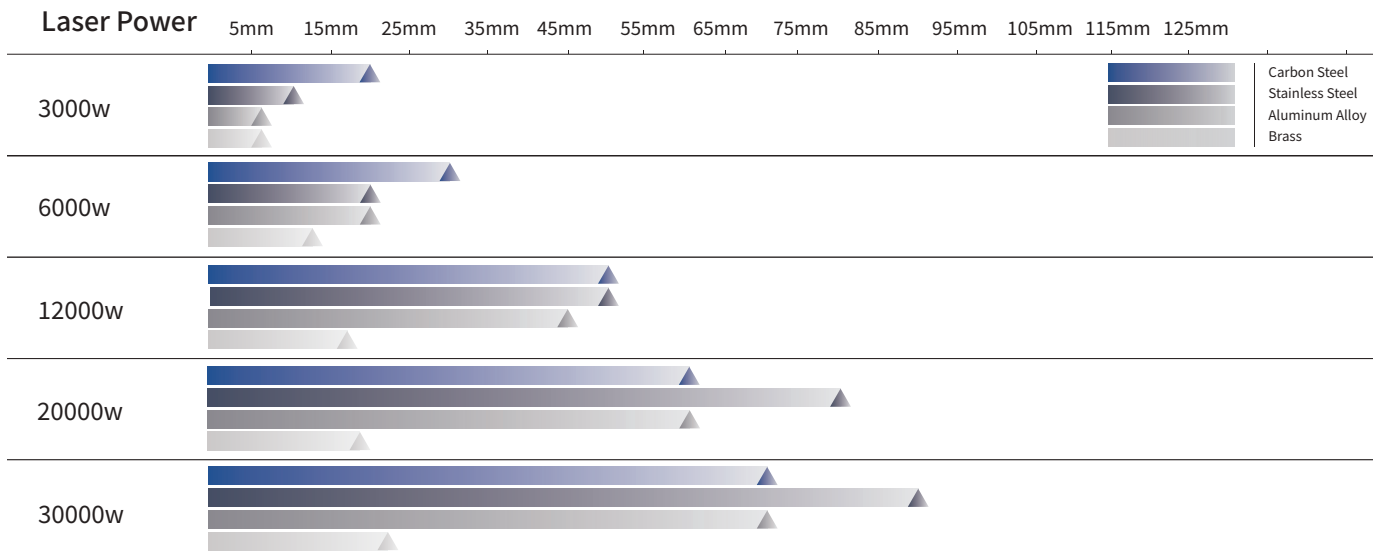
Machine Foundation *The marked size has about 10mm error



Cutting Samples



Cutting Capacity



The actual machines shall prevail and above data & pictures are only for reference.



Shape Metal, Shape Trust



As a global enterprise, HSG sticks to providing professional and convenient service support to customers at home and board



Professional Training

Multiple technical training services and free operation training are provided for customers and dealers in a timely manner.



Efficient Support

Humanistic service model, online services and 7*24 hotline to offer solutions and assistance.



Optimized Transport

Multi-channel transport solutions and a professional transport solution team providing various transport cases to satisfy the demand of customers and save transportation fees.



Sufficient Accessories

Highly efficient accessory delivery service; multiple network inventories jointly respond to accessory demand, shortening customers' waiting times and accelerating production.



Careful Services

Domestic door-to-door service and free proofing, with over 100+ dealers providing efficient and convenient services.

HSG

Shape Metal, Shape Trust



Website



Facebook



Youtube

Headquarters Add.: No. 4, Anye Road, Shunjiang Community Industrial Park,
Beijiao Town, Shunde District, Foshan, Guangdong, China

Website: www.hsglaser.com

Email: info@hsglaser.com

Tel: +86 757-66833906